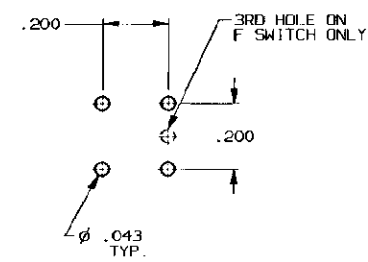
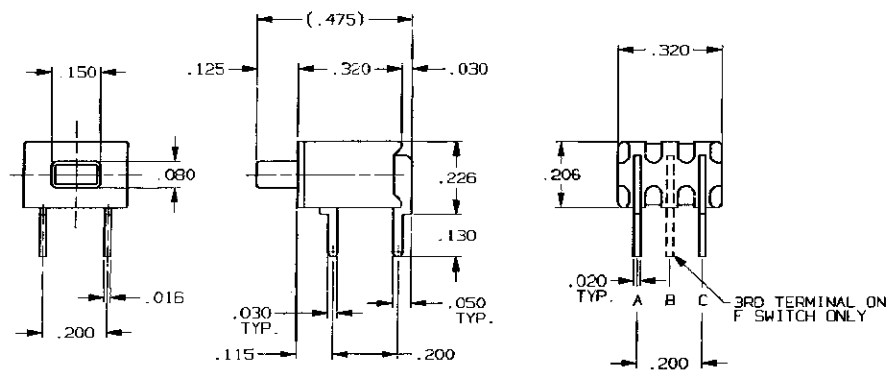


CONVERSION CHART	
INCH	MM
.002	0.05
.010	0.25
.016	0.41
.020	0.51
.030	0.76
.043	1.09
.050	1.27
.080	2.03
.115	2.92
.125	3.18
.150	.130
.200	5.08
.206	5.23
.226	5.74
.320	8.13
.475	12.07



SPECIFICATIONS:

MATERIALS:
CASE: HIGH TEMPERATURE POLYESTER, UL 94V-0.
ACTUATOR BUTTON: THERMOPLASTIC. COLDRS: SEE CHART BELOW.
MOVING CONTACT: COPPER ALLOY, GOLD PLATED OVER NICKEL.
FIXED CONTACT: COPPER ALLOY, GOLD PLATED OVER NICKEL.
TERMINALS: COPPER ALLOY, TIN LEAD PLATED.
TERMINAL SEAL: SP EPOXY
DP EPOXY OPTIONAL.

ELECTRICAL:
CONTACT RATING: GOLD = 0.4 VA MAX. @ 20 VDC OR PEAK AC.
INITIAL CONTACT RESISTANCE: 20 MILLIOHMS MAX.
INSULATION RESISTANCE: 1,000 MEGOHMS @ 500 VDC MIN.
DIELECTRIC STRENGTH: 1,000 VAC @ SEA LEVEL.
LIFE EXPECTANCY: GOLD: 1 POLE = 100,000 CYCLES
2 POLES = 80,000 CYCLES.

MECHANICAL:
ACTUATION FORCE: TP11CG-RA: 9 oz (.26 Kg)
TP11FG-RA: 12 oz (.34 Kg).
ACTUATION TRAVEL: .030 APPROX.

ENVIRONMENTAL:
OPERATING TEMPERATURE: -22°F TO +149°F (-30°C TO +65°C).
STORAGE TEMPERATURE: -22°F TO +149°F (-30°C TO +65°C).

NOTES:

1. INTERPRET DRAWING PER ASME Y14.5M-1994.
2. FORMERLY TPB11CG-RA.

(*)	COLOR
0	BLACK
2	RED
6	BLUE

MODEL NUMBER	ACTION	CONTACTS	
		FREE BUTTON	DEPRESSED BUTTON
TP11CG-RA(*)	SPST NORMALLY OPEN	NONE	A TO C
TP11FG-RA(*)	SPDT MOMENTARY	B TO A	B TO C (MOM)

OUTLINE DRAWING
SPECIFICATIONS ARE SUBJECT TO CHANGES WITHOUT NOTICE

REV A REVISIONS PER CG3C-0173-02 APD-MZ 03OCT02	THIRD ANGLE PERSPECTION	UNLESS OTHERWISE SPECIFIED DIMENSIONS ARE IN INCHES DO NOT SCALE PRINT	ORIGINAL DATE OF DRAWING: 7-9-77	TYCO ELECTRONIC! TITLE: OUTLINE DRAWING PUSHBUTTON SWITCH TP11CG/FG-RA(*) DWG. NO 1437571-8 REV. A	
	TOLERANCES (EXCEPT AS NOTED) ANGULAR - ±1° DECIMAL .XX = ±.010 DECIMAL .XXX = ±.010 DECIMAL .XXXX = ±.010	FILE NAME: 401310UT DIRECTORY: T1NEN01H	DRAWN: B. BUCKHEIT DATE: 7-9-77		DWG. NO 1437571-8
	AGAT CONFIDENTIAL This document contains information which is the exclusive property of Agat Inc. Distribution, reproduction or use by others is not permitted without the expressed written consent of Agat Inc.	MATERIAL: SEE SPECIFICATIONS	CHECKED: F. D. KIRCHOFF DATE: 7-9-77		DWG. NO 1437571-8
	FIN. PT: SEE SPECIFICATIONS	APPROVED: F. D. KIRCHOFF DATE: 7-9-77	CODE IDENT. NO. 91506 DWG. SIZE C		SCALE: SHEET 1 OF 1